



Legend

- Sampling Station
- Transect
- Pipeline
- Power Line
- Corridor Crossing Path

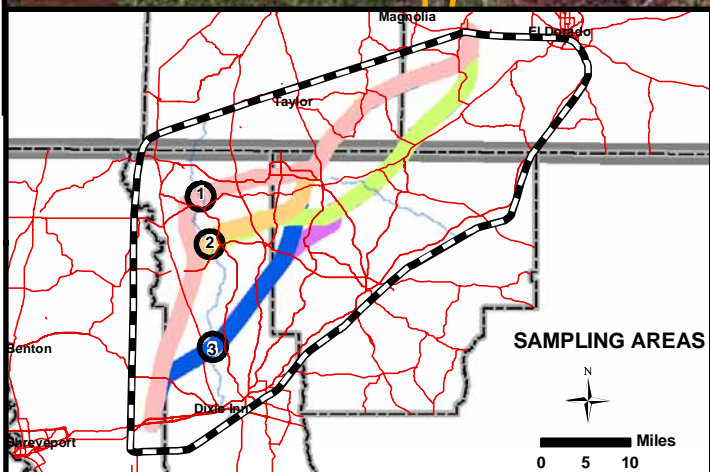
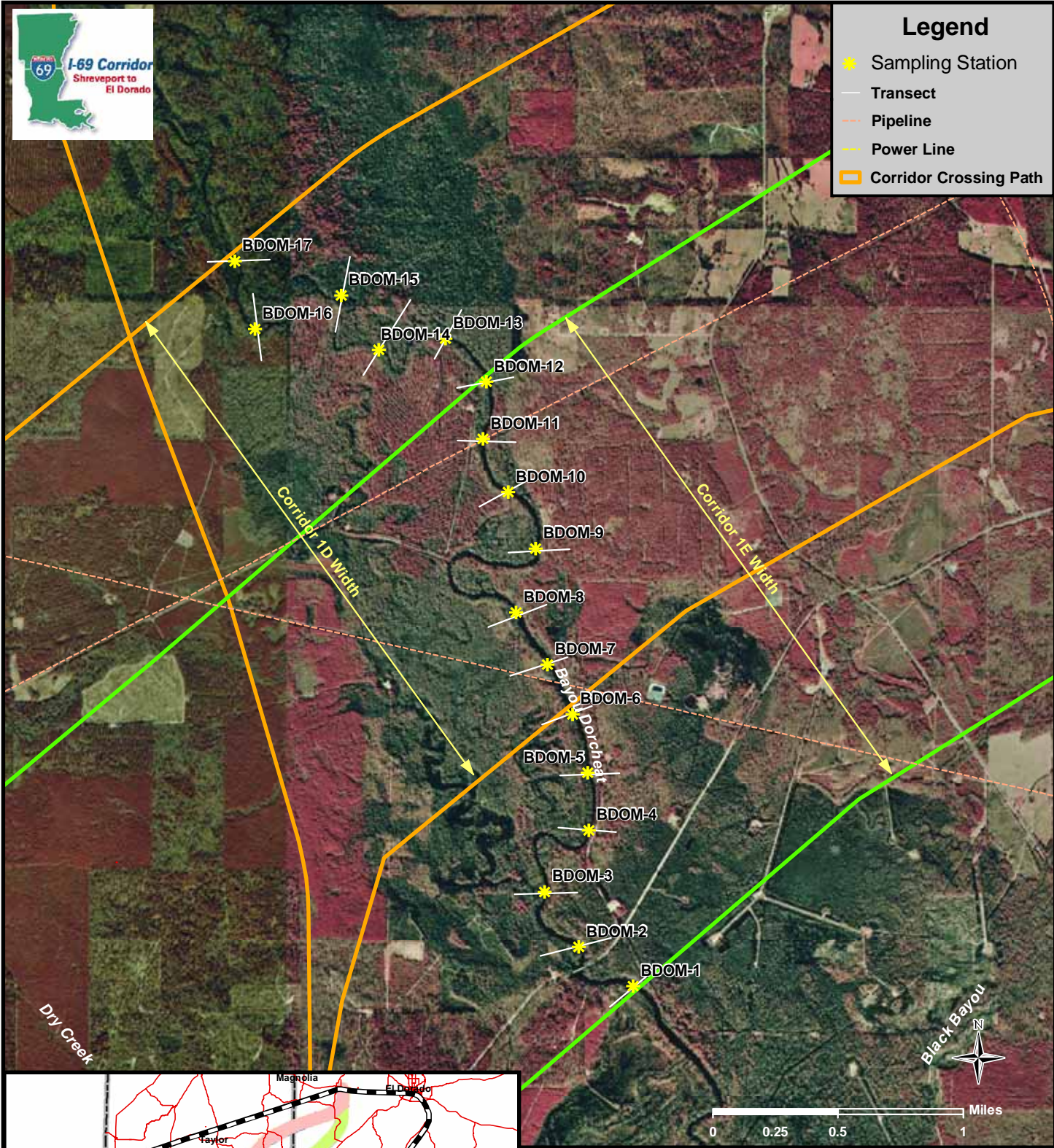


Figure 3.1b
BAYOU DORCHET
 Middle Crossing Path: Sampling Area 2

Interstate 69
Section of Independent Utility No. 14

Louisiana State Project No. 736-99-1032
 Arkansas State Project No. 070212
 Federal Aid Project No. CBI-9901(516)
 Junction I-20 to US 82 near El Dorado, Arkansas
 Bossier, Claiborne and Webster Parishes, Louisiana
 Columbia and Union Counties, Arkansas

Color Infrared Imagery Source: Louisiana Oil Spill Coordinator's Office